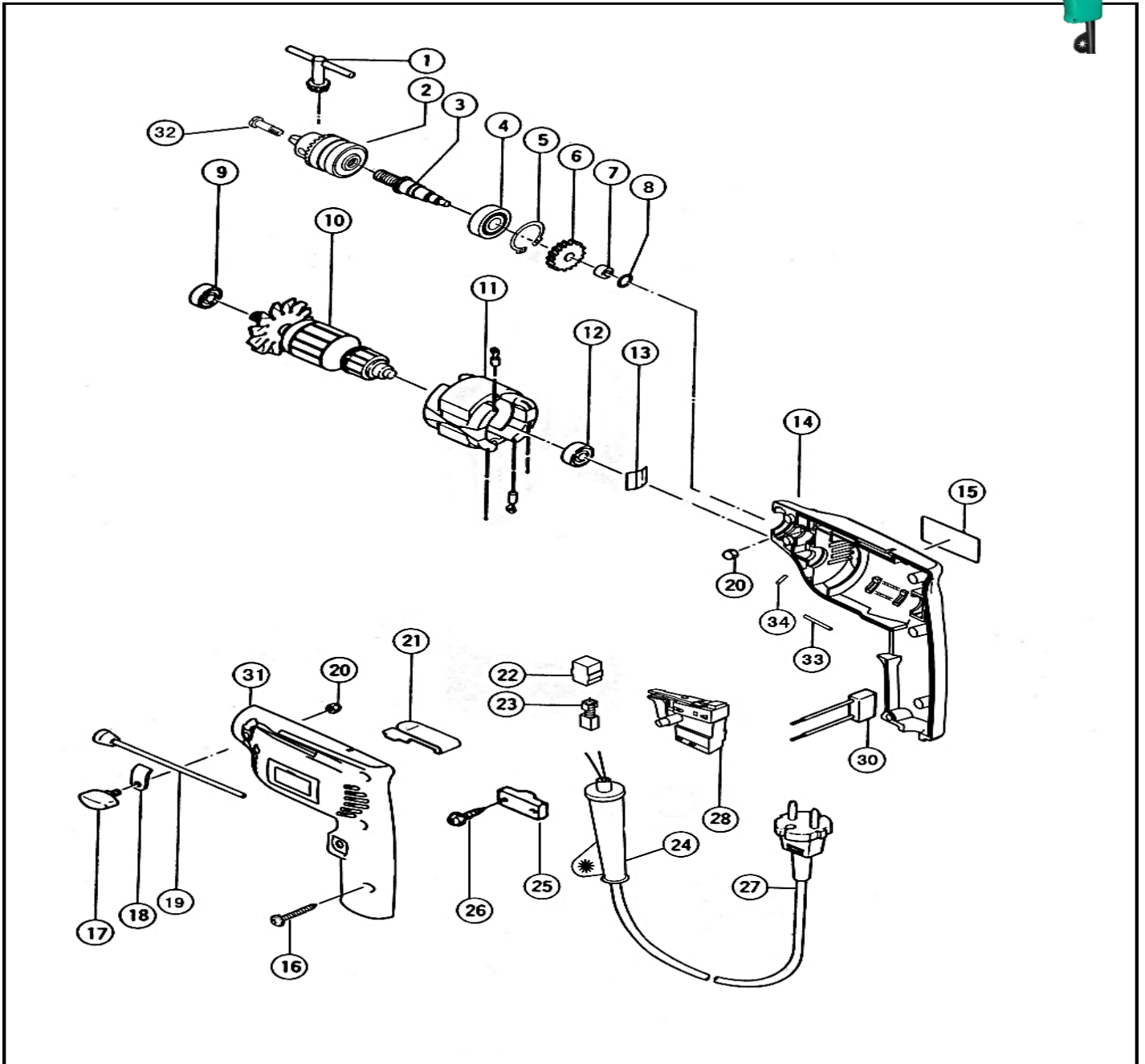


AJZ02-6A / J1Z-FF02-6A  
DCA 1/4" ELECTRIC DRILL (RL) 230W [D6SH]

NO : DCA010  
SPECIFICATION :  $\Phi 6\text{mm}$





NO	Code	Name of Spare Parts	
1	30029900009	Chuck Wrench	
2	30271200001	Drill Chuck 0.6-6mm (TY-FJ-ZJ: 3/8-24UNF)	
3	30020100021	Drive Spindle	
4	30021400053	Ball Bearing 6001VV (LFB)	
5	30021600013	Circlip for Shaft 12	
6	30020500054	Gear	
7	30021400168	Friction Bearing (5×10×6)	
8	30010300004	O Ring (10×1.5)	
9	30021400025	Ball Bearing 626ZZ (RB)	
10		Armature Assembly	
11		Stator Assembly	
12	30021400025	Ball Bearing 626ZZ (RB)	
13	30021600116	Washer	
14		Right-half Motor Housing	
15		Nameplate	
16	30021200022	Pan Head Tapping Screw ST4.2×19	
17	30019900202	Wing Bolt	

NO	Code	Name of Spare Parts	
18	30024000091	Depth Gauge Holder	
19	30024000092	Depth Gauge	
20	30021300020	Acorn Nut M5	
21	30024000090	Hook	
22	30030700039	Carbon Brush Holder / Pair	
23	30030600050	Carbon Brush / Pair	
24	30010100011	Cord Guard	
25	30016300006	Strain Relief (Cord Clip)	
26	30021200008	Pan Head Tapping Screw ST4.2×16 (with Flat Washer)	
27	30030300431	Cord (2×0.75×2.7)	
28	30030100012	Trigger Switch	
30	30030400010	Capacitor 0.22μF	
31		Left-half Motor Housing	
32	30021100207	Check Screw M5×16	
33	30010200007	Rubber Pin (2.6×14)	
34	30010200010	Rubber Pin (2.8×6)	
Set 1	30005090153	Motor Housing (C/W No : 14,31)	